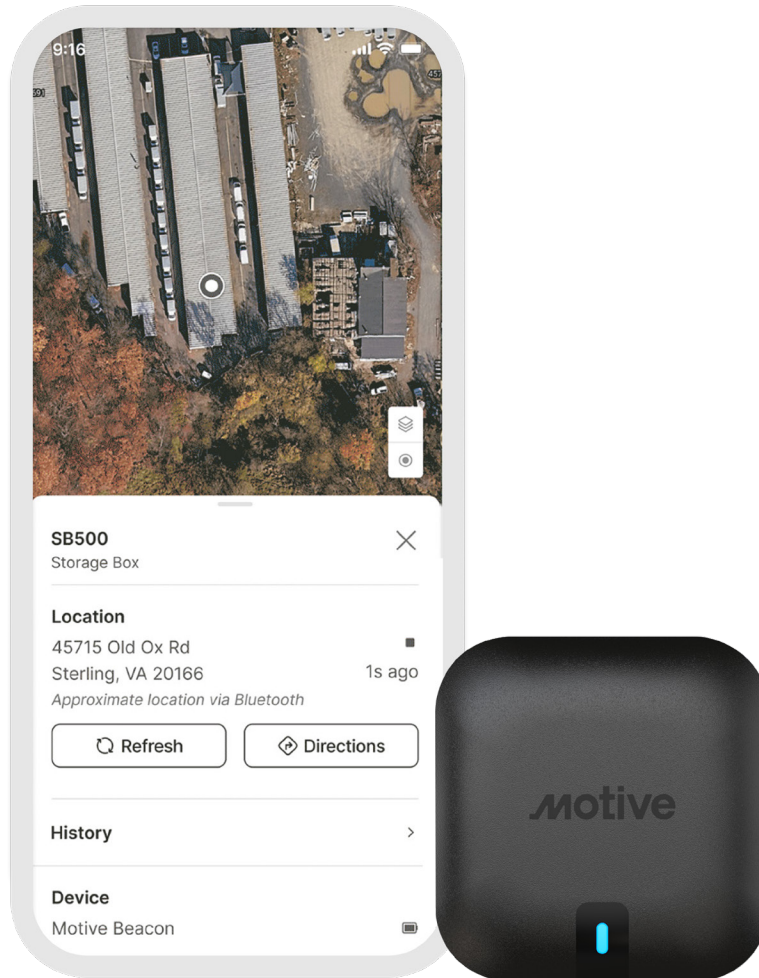


# Motive



# Motive Beacon

Track anything at scale.

This discreet and durable Bluetooth tracker taps into the Motive Mesh Network to deliver reliable location updates helping you automate tracking, improve utilization, and safeguard assets.

Key features



Compact and discreet



Rugged and waterproof



Multiple mounting options



Key benefits

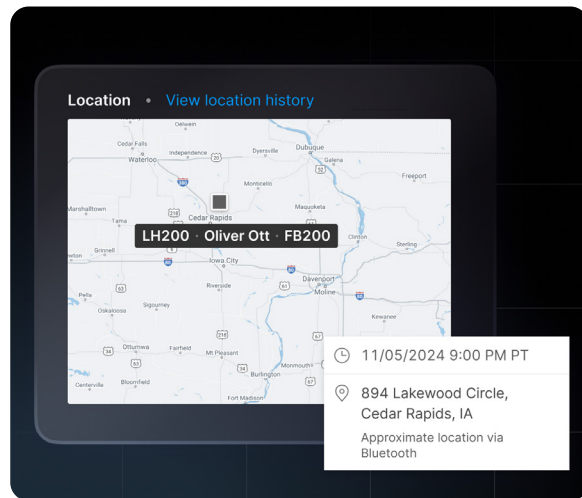
Reduce blind spots

- Keep equipment visible across your fleet by tapping into devices in the Motive Mesh Network.
- Locate your most essential equipment like containers, attachments, and small tools.
- Receive location updates as frequently as every minute when Beacons travel with Motive Vehicle Gateway equipped vehicles.



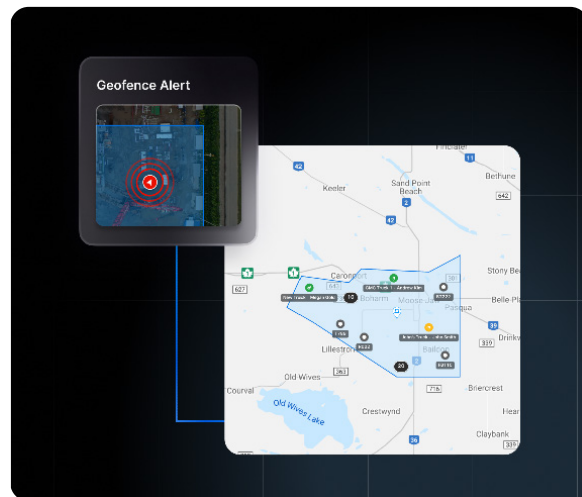
## Optimize equipment utilization

- Monitor your entire inventory alongside your drivers and vehicles.
- Re-allocate equipment to where it's needed most, or right-size your owned inventory.
- Redeploy assets to productive use and re-route equipment that may have been placed on the wrong truck to keep operations running smoothly.



## Expose unauthorized movements

- Know when equipment enters or exits a job site right from your office with geofence alerts.
- Use historical breadcrumbs to pinpoint when and where an asset was last seen.
- Beacon syncs automatically with drivers and vehicles automatically so you know exactly where your assets are heading.



## Specifications

### Motive Mesh Network

- A network consisting of connected Motive Vehicle Gateways, the Motive Fleet App, and the Driver App that provides approximate Bluetooth location updates to help find your equipment.

### Connectivity

- Bluetooth 5

### Location

- Bluetooth connection provides you with location data viewable in the Motive Fleet App and Fleet View dashboard.
- Real-time and historic location data is available in conjunction with other vehicle and asset location information in Motive.
- Location is based on the GPS location of nearby devices on the Motive Network. These devices detect the Bluetooth signal of your Motive Beacon and automatically report its approximate last known location.

## Battery

- Expected life of 4 years.
  - CR2477X Coin Cell (25mm x 8mm).
  - User-replaceable.
  - Non-rechargeable.
- 

## Installation

- Install the mount using the provided adhesive, and optionally use screws to secure to your asset.
- 

## Operating conditions

- Operating temperature: -40°C to +85°C
  - Storage temperature: -40°C to +85°C
  - Certified at IP67 rated waterproof and dustproof per IEC standard 60529
- 

## Hardware

- 55.4 × 53.8 × 21mm (24.1mm with mount bracket)
- 5-year warranty
- LED located on the top surface for device diagnostics

# **motive**



---

[gomotive.com](http://gomotive.com)



---

855-434-3564



---

[sales@gomotive.com](mailto:sales@gomotive.com)