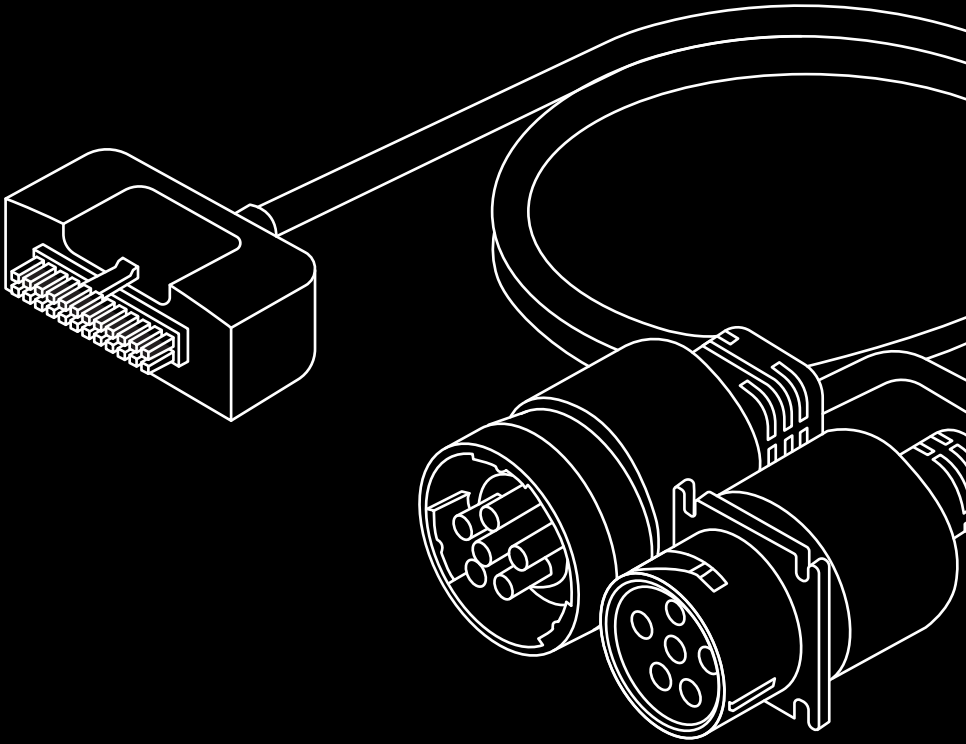


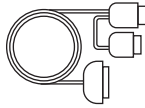
# Cable VCBL-Y-6PIN

AI Dashcam Plus installation guide for vehicles with a 6-Pin diagnostic port



**motive**

## In the box



**Cable VCBL-Y-6PIN**



**Cable ties**

---

## Tools Required

- Adjustable wrench
- Philips screwdriver

---

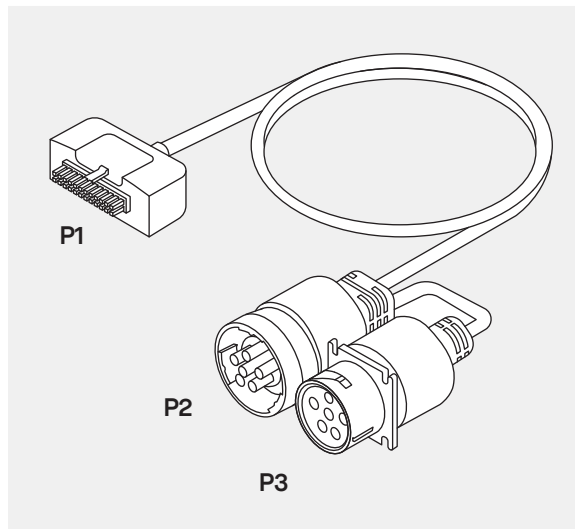
## Safety Precautions

Before starting the installation, ensure the following:

- The parking brake is engaged.
- The engine is off.
- The main power switch (if available) is turned off.

---

The **VCBL-Y-6PIN** cable includes three labeled ends:



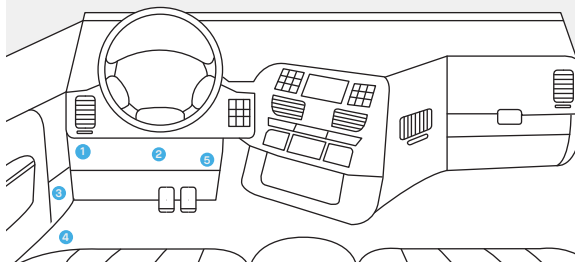
Cable End	Description
P1	Connects to the vehicle adapter
P2	6-Pin male connector - plugs into the vehicle's 6-Pin diagnostic port
P3	6-Pin female connector - maintains access to diagnostics when using the Y-cable installation

The 6-Pin connectors include a locking collar to secure the connection in place.

## 1. Locating the 6-Pin Diagnostic Port

The 6-Pin diagnostic port is typically located on the Driver's side underneath the dashboard and is gray in color.

The connector is circular and may be gray or black in color.



**Note:** The numbers in the above image indicate the most probable locations of the diagnostic port.

---

## 2. Connect the AI Dashcam Plus

**WARNING!** California state law prohibits relocating the in-vehicle diagnostic connector during installation. To remain compliant, always follow the Direct Plug-In installation instructions when installing this cable.

There are 2 ways to connect the cable to the vehicle's diagnostic port:

### 1. Direct Connection

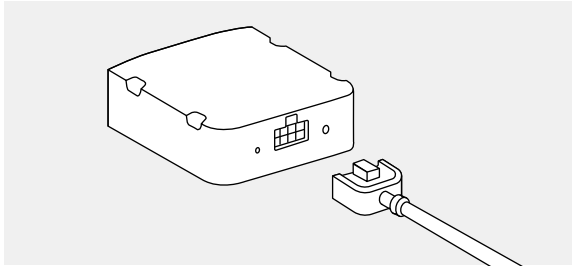
- The quickest method to get started.
- Plug the cable directly into the diagnostic port.

### 2. Y-Cable Connection

- Maintains access to the diagnostic port.
- Ideal for covert installations

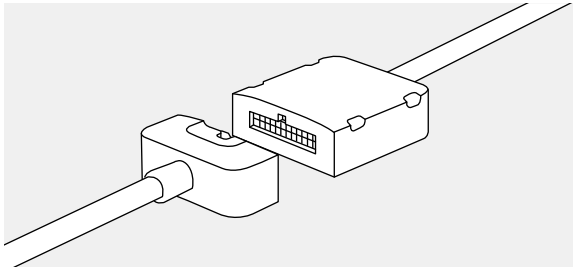
## 2. Connect the AI Dashcam Plus

### 2.1 Plug the AI Dashcam Plus



Plug the AI Dashcam Plus cable into the vehicle adapter

### 2.2 Connect the vehicle adapter



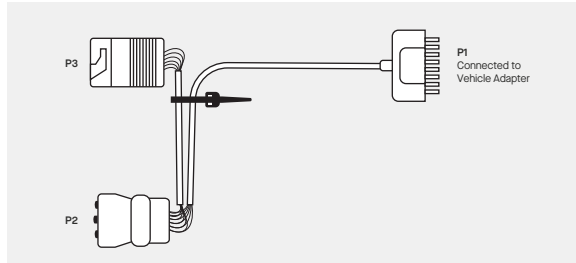
Plug the vehicle adapter into one end of the Y cable (P1).

## 2. Connect the AI Dashcam Plus

### 2.3 Connect the cable

#### Option 1: Direct Cable Connection

Use this method if you're connecting the cable directly into the vehicle's diagnostic port or operating in the state of California



#### Steps:

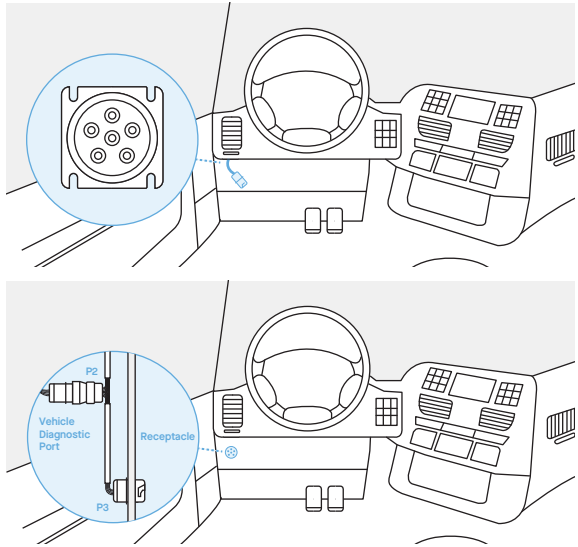
1. Secure the connection and use a cable tie to fasten the shorter cable P3 (which has the spare diagnostic connector) to the main cable. Place the zip tie near the spare diagnostic connector for secure fastening
2. Plug the male end of the Motive cable (P2) directly into the vehicle's diagnostic port.
3. The P3 end is not used for this installation type

**Note:** The OEM diagnostic port will not be available while the cable is plugged in.

## 2. Connect the AI Dashcam Plus

### Option 2: Y-Cable Connection

For covert installations, you'll want to use the Y splitter



#### Steps:

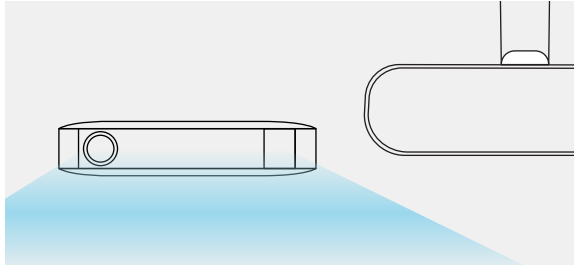
1. Remove the OEM diagnostic port from its receptacle in the dashboard.
2. Plug the male end of the Motive cable (P2) into the removed diagnostic port.
3. Install and secure the female end of the Motive Cable (P3) using the appropriate clip into the original receptacle where the diagnostic port was located in the vehicle.

**Note:** The vehicle's diagnostics will remain accessible using the additional port on the Cable VCBL-Y-6PIN (P3)

### 3. Test and Mount the AI Dashcam Plus

Refer to the AI Dashcam Plus Installation Guide available at [gomotive.com/aidashcamplus-install](https://gomotive.com/aidashcamplus-install) for instructions on testing and mounting the device to the vehicle's windshield or the left side of the rearview mirror.

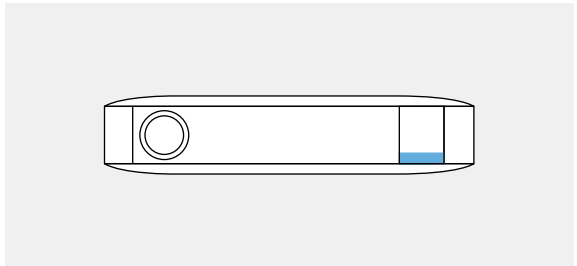
Once mounted, the final installation should resemble the example shown here



---

#### Power Connection

Start the vehicle's engine. Once the alert/right LED turns blue, your AI Dashcam Plus is powered on and connected!



#### 4. Cable Regulatory and Safety information

This instruction apply for all VCBL series cable

##### 4.1 Recycling - Package



EU Package Regulation (EU) 2025/40 and its amendments as well as Italy Decreto Legislativo 3 settembre 2020, n. 116

##### 4.2 Hazardous substance compliance Statement - RoHS Directive, REACH regulation

###### Reduction of Hazardous Substances

The device is compliant with the EU Restriction of Hazardous Substances (RoHS) Directive 2011/65/EU and its amendments, this Directive restricts the use of certain hazardous substances in electrical and electronic equipment, and the EU REACH Regulation (EC) No. 1907/2006 and its amendments.

##### 4.3 CE compliance statement



The CE Marking indicates that Motive is compliant with the following Directive: RoHS Directive 2011/65/EU and its amendments

The full text of the EU declaration of conformity and installation manual is available at the following internet address:

[gomotive.com/dashcamplus-install](https://gomotive.com/dashcamplus-install)

---

#### Manufacturer:

Motive Technologies, Inc., 55 Hawthorne St., Suite #400, San Francisco, CA 94105, USA

#### EU Authorised Representative:

Motive Technologies Netherlands B.V., De Boelelaan 30, 1083 HJ Amsterdam, The Netherlands

#### UK Authorised Representative:

Motive Technology UK Limited, 2nd Floor, 1-5 Clerkenwell Road, London, England, EC1M 5PA

Motive Technologies, Inc. ("Motive") provides the Hardware Terms and Warranty, see more details, please refer to

<https://gomotive.com/legal/hardware-terms/>

#### Troubleshooting:

support@gomotive.com  
855-434-3564

# Potential Unlocked

**motive**

[gomotive.com](https://gomotive.com)