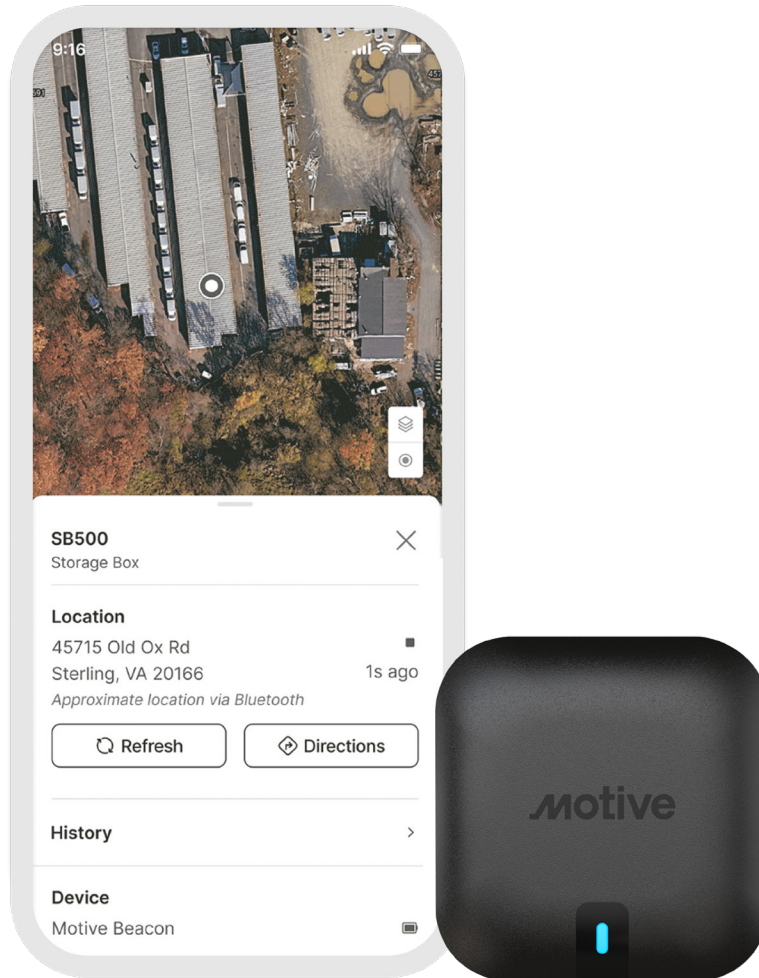


Motive



Motive Beacon

Track anything at scale.

Locate crucial equipment and tools with Motive Beacon. This discreet and durable Bluetooth tracker taps into the Motive Mesh Network to deliver reliable location updates helping you safeguard assets, spot theft, and improve utilization with ease.

Key features



Compact and discreet



Rugged and waterproof



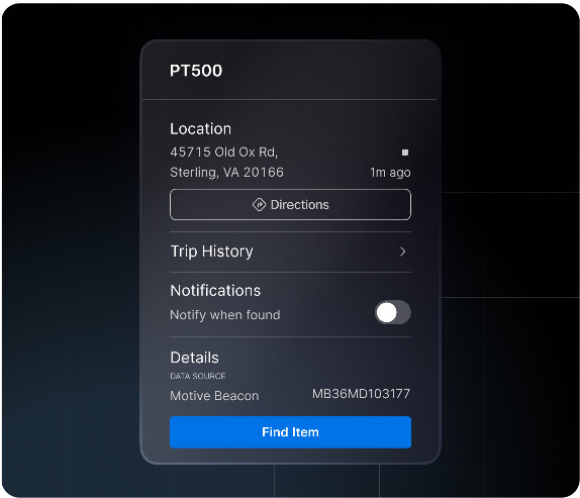
Multiple mounting options



Key benefits

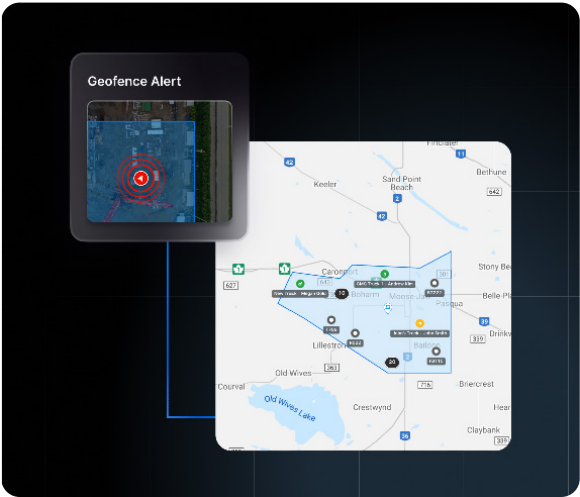
Find misplaced assets

- Locate missing assets at job sites, depots, and other locations.
- Redeploy assets to productive use and recover missing items.



Recover stolen assets

- Motive Mesh Network can help locate stolen assets — even away from job sites you control.
- Use geofencing to learn when your asset has left an authorized area.



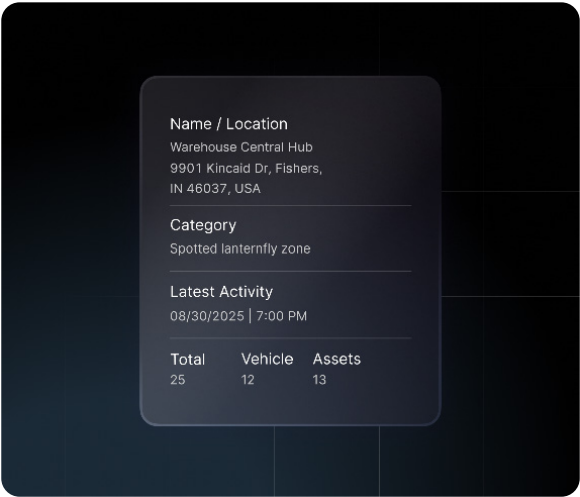
Discover misrouted assets

- Re-route assets accidentally placed on the wrong vehicle to keep operations running smoothly.
- Leverage automated pairing (coming soon) with the Motive Vehicle Gateway to identify which of your vehicles and drivers is currently transporting an asset.



Optimize resource allocation

- Track volume of assets at warehouses, job sites, and depots.
- Re-allocate equipment to where it's needed most, or right-size your owned assets.



Specifications

Motive Mesh Network	<ul style="list-style-type: none">• A network consisting of connected Motive Vehicle Gateways, the Motive Fleet App, and the Driver App that provides approximate Bluetooth location updates to help find your equipment.
Connectivity	<ul style="list-style-type: none">• Bluetooth 5
Location	<ul style="list-style-type: none">• Bluetooth connection provides you with location data viewable in the Motive Fleet App and Fleet View dashboard.• Real-time and historic location data is available in conjunction with other vehicle and asset location information in Motive.• Geolocation data is provided based on the GPS location of nearby devices on the Motive Mesh Network. These devices listen for the Bluetooth Advertisement of Motive Beacon and report their GPS location as the Beacon's approximate last known location.
Battery	<ul style="list-style-type: none">• Replaceable lithium battery (LiMnO2) lasts 4 years.• Coin cell size: 25mm x 8mm (CR2477)• Non-rechargeable
Installation	<ul style="list-style-type: none">• Install the mount using the provided adhesive, and optionally use screws to secure to your asset.
Operating conditions	<ul style="list-style-type: none">• Operating temperature: -40°C to +85°C• Storage temperature: -40°C to +85°C• Certified at IP67 rated waterproof and dustproof per IEC standard 60529
Hardware	<ul style="list-style-type: none">• 55.4 × 53.8 × 21mm (24.1mm with mount bracket)• 5-year warranty• LED located on the top surface for device diagnostics



gomotive.com



855-434-3564



sales@gomotive.com