

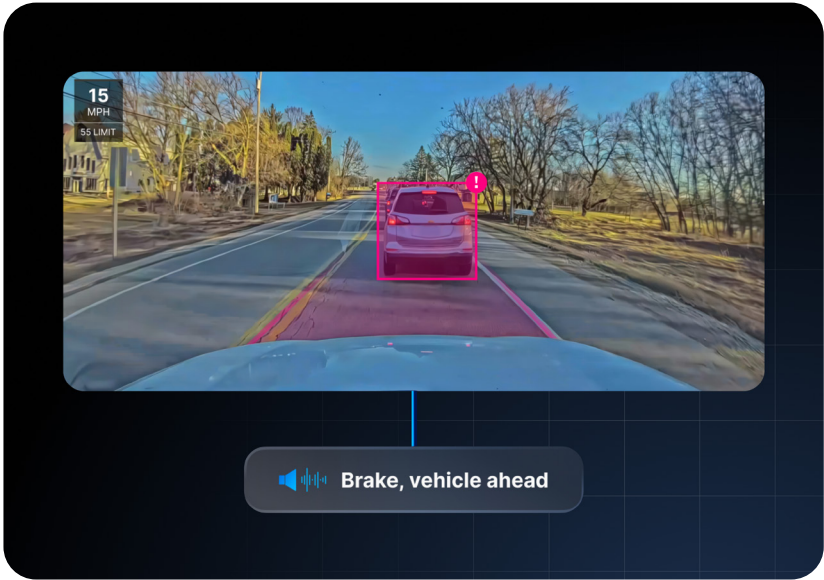
# motive



## Road-Facing AI Dashcam

Prevent accidents and reduce risk with the industry leader in AI performance and video quality.

The Motive difference



Motive uses the highest performance AI processor for computer vision from Ambarella.



Motive detects more than 10 unsafe behaviors with industry-leading accuracy.



HD video with wide field of view: 30 frames per second vs 15 frames per second.



Configurable storage based on video quality: Up to 8 days with long-duration cloud recall options.



Battery backup recording in case of power loss.



Driver-centric with visual LED and quick capture button.



AI Dashcam and AI Omnicam provide 360-degree visibility around your vehicle.

# Key features

---

## Instant risk detection

### Safety event capture

- **Core risk**
  - Close following
  - Unsafe lane change
  - Lane swerving
- **Traffic signals & signs**
  - Stop sign violation
- **Awareness**
  - Obstructed camera
- **Other**
  - Collision
  - Near collision
  - Forward collision warning
  - Unsafe parking
- **Speeding**
  - Speeding over posted
  - Speeding over policy
- **Harsh driving**
  - Hard braking
  - Hard acceleration
  - Hard cornering

- **Positive driving**
  - Safe distancing
  - Alert driving

### In-cab audio and visual alerts:

- Close following
- Unsafe lane change
- Stop sign violation
- Obstructed camera
- Forward collision warning
- Speeding over posted
- Speeding over policy
- Hard braking
- Hard acceleration
- Hard cornering
- Unidentified trip
- Dash cam disconnect/activation

---

## Driver coaching

- Motive Safety Team
- Safety Hub
- Custom unsafe behavior detection
- Event Severity
- AI Coach
- Driver App coaching
- Coaching Sessions
- Training videos
- Customizable Safety Score

---

## Accident management

- Collision detection and video upload
- Video recall: Up to 3 minutes/request (60 minutes with timelapse recall)
- Automated collision reporting
- First Responder

- 360-degree visibility
- Live streaming
  - Live images
  - Engine-off recording
  - In-cab audio recording
- Camera health (installation issues, disconnects, etc.)

Camera



	Road-facing camera
Resolution	1920 × 1080 (1080p)
Frame rate	30 fps
Field of view	150°
Pixel size	2.0 μm x 2.0 μm
Dynamic range	104 dB
Aperture	f/2.35

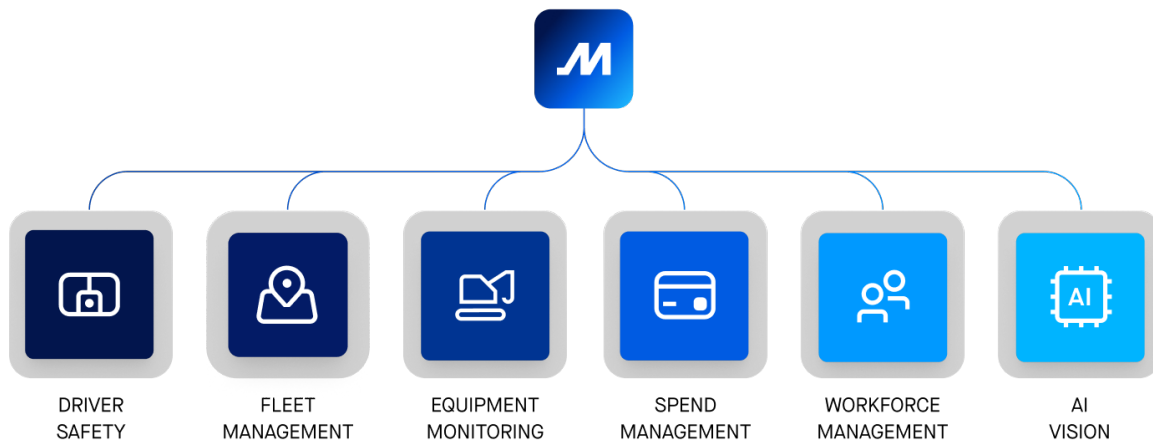
- Hardware
- Model #: DC-53
  - Configurable recording: 35-195 hours
  - Industrial-grade battery
  - Quick Capture button
  - Custom mount: Supported
  - Privacy lens cover: Optional
  - Cable length: 13.1 ft (4 m)
  - Dimensions: 4.53 × 2.36 × 1.06 in (115 × 60 × 27 mm)
  - Operational temperature: -40°F-185°F (-40°C-85°C)
  - Storage temperature: -40°F-239°F (-40°C-115°C)
  - Connectivity: High-speed LTE through included Motive Vehicle Gateway
- Microphone: Digital, omni-directional
  - Speaker: Built-in, max 80 dB
  - Multi-color LED light bar for in-cab alerts
  - IP rating: IP52
  - Warranty: 5 years

## Requirements

The following prerequisites must be met in order to use all the safety features available within the Motive platform.

- Motive Vehicle Gateway model: VG 3.55 and above
- Motive Driver App (Android or iOS): v36
- Motive subscription:
  - All features - Driver Safety and Fleet Management plan
  - AI Coach - Workforce Management plan

**Motive is the AI-powered Integrated Operations Platform for the physical economy.**



# Motive



[gomotive.com](https://gomotive.com)



855-434-3564



[sales@gomotive.com](mailto:sales@gomotive.com)

### About Motive

Motive empowers the people who run physical operations with tools to make their work safer, more productive, and more profitable. For the first time, safety, operations, and finance teams can manage their workers, vehicles, equipment, and fleet-related spend in a single system. Motive serves nearly 100,000 customers from small businesses to Fortune 500 enterprises such as Halliburton, KONE, Komatsu, NBC Universal, and Maersk across a wide range of industries, including transportation and logistics, construction, energy, field service, manufacturing, agriculture, food and beverage, retail, waste services, and the public sector. Visit [gomotive.com](https://gomotive.com) to learn more.