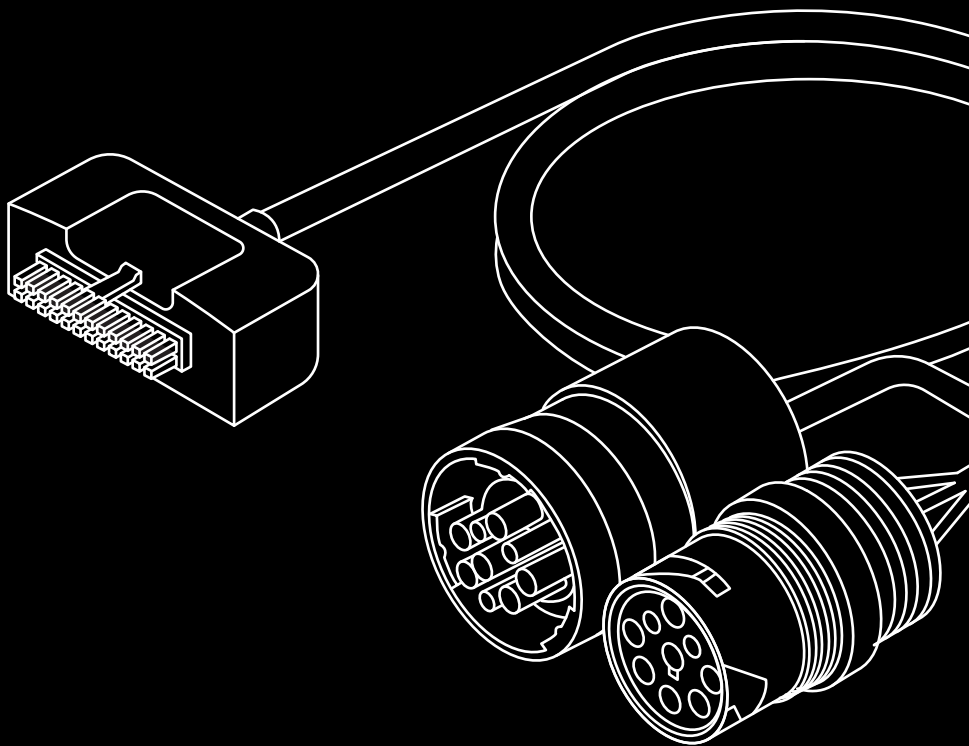


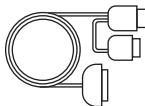
# Cable VCBL-Y-1939

AI Dashcam Plus installation guide for vehicles  
with a 9-Pin port

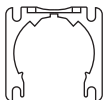


**motive**

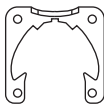
**In the box**



**Cable VCBL-Y-1939**



**Flange Clip**



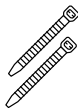
**Screw Clip**



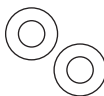
**Round Jam Clip**



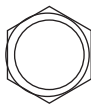
**Type 2 Indicator label**



**Cable ties**



**Washer**



**Front nut**

---

**Tools Required**

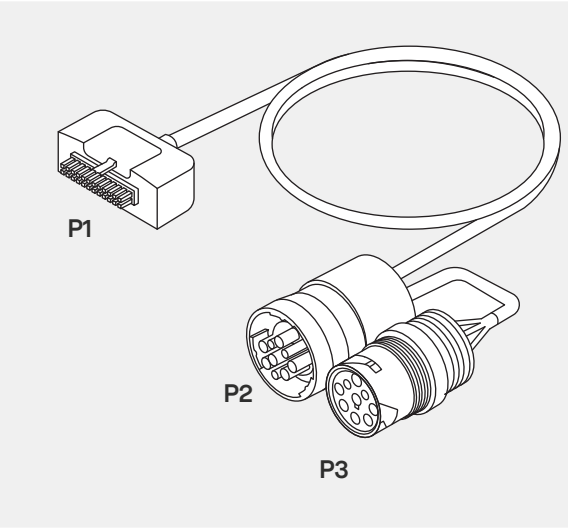
- **Screwdriver Set**
- **Adjustable wrench**
- **Plastic prybar**
- **Socket set**

---

**Safety Precautions**

- Before starting the installation, ensure the following:
- The parking brake is engaged.
  - The engine is off.
  - The main power switch (if available) is turned off.

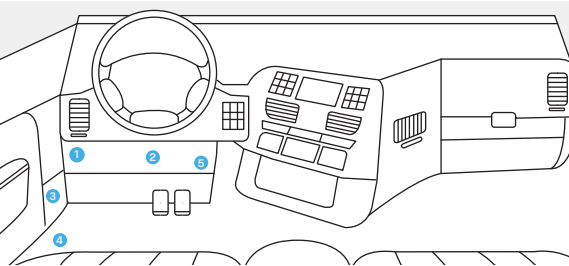
The **VCBL-Y-1939** cable includes three labeled ends:



Cable End	Description
P1	Connects to the vehicle adapter
P2	Connects to the vehicle's diagnostic port
P3	Optional: Connects to the dashboard receptacle to maintain the diagnostic port accessible for other uses. Required with Y-cable installations

**1. Locate the diagnostic port**

The J1939 9-Pin diagnostic port is typically located on the driver's side of the cab beneath the dash panel. It is either black or green in color and features 9 Male Pins.



**Note:** The numbers in the above image indicate the most probable locations of the diagnostic port.

## 2. Connect the AI Dashcam Plus

**WARNING!** California state law prohibits relocating the in-vehicle diagnostic connector during installation. To remain compliant, always follow the Direct Plug-In installation instructions when installing this cable.

There are 2 ways to connect the cable to the vehicle's diagnostic port:

### 1. Direct Connection

- The quickest method to get started.
- Plug the cable directly into the diagnostic port.

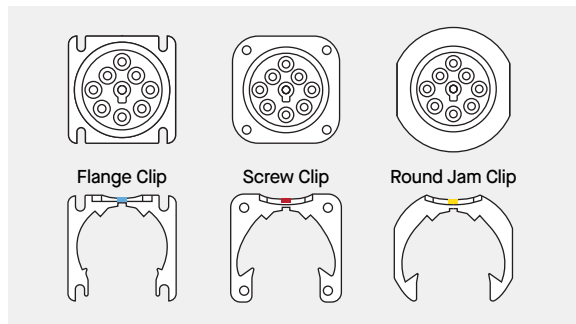
### 2. Y-Cable Connection

- Maintains access to the diagnostic port.
- Ideal for covert installations

**Note:** If you are choosing **Direct Connection** and skipping the Y-cable setup, you may proceed directly to **Step 2.5**.

### 2.1 Select the mounting clip

Choose the mounting clip that matches your vehicle's existing connector.



Blue Clip -  
Flange

Commonly used in vehicles equipped with a "square bracket" style 9-pin diagnostic port.

Red Clip -  
Screw Mount

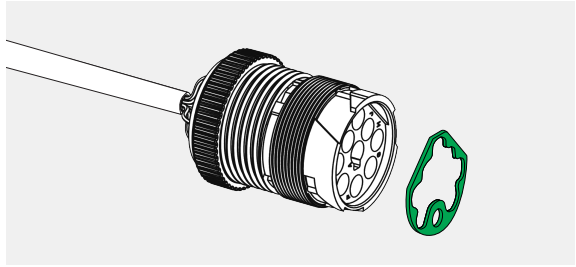
This mount type is common in Navistar-International Trucks.

Yellow Clip -  
Jam Mount

This mount type is commonly used in vehicles (older or larger trucks) equipped with a "hex nut style" diagnostic port. We advise using a combination of provided washers and nuts to fit them perfectly.

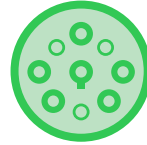
## 2. Connect the AI Dashcam Plus

### 2.2 Apply Type 2 indicator label (if needed)



**Type 1**

2015 or older model  
year vehicles



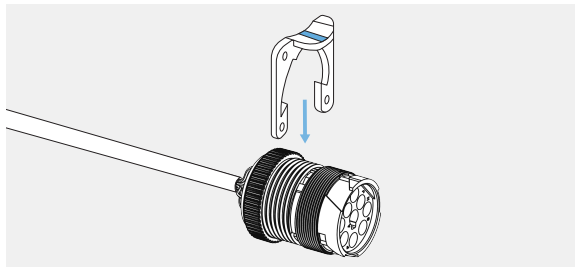
**Type 2**

2016 or newer model  
year vehicles

If your vehicle uses a Type 2 (green pin) connector (common in 2016 model year or newer), apply the green Type 2 indicator label to the P3 end of the cable.

For 2015 or older vehicles (Type 1 – black pin), no label is required to be applied.

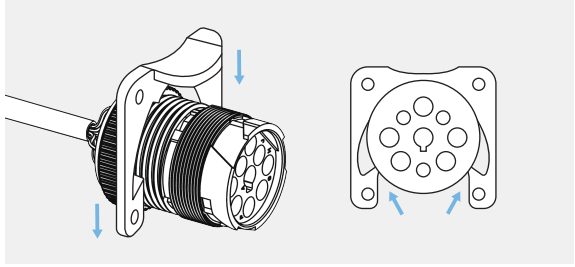
### 2.3 Attach the mounting clip



Attach the appropriate mounting clip on the connector (P3) - match up the colored line with the white line on the connector

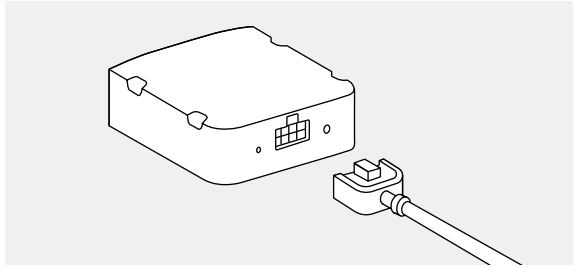
## 2. Connect the AI Dashcam Plus

### 2.4 Lock the mounting clip



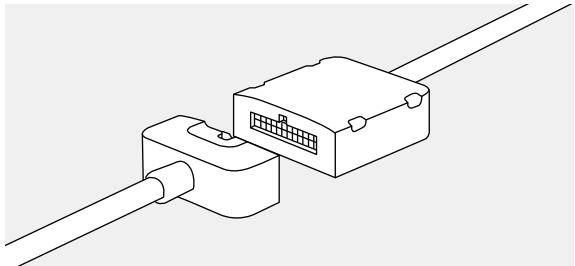
Apply inward pressure to the left and right tabs until the clip is fully seated. Ensure that the locking teeth are engaged at the positions marked by the upward arrows.

### 2.5 Plug the AI Dashcam Plus



Plug the AI Dashcam Plus cable into the vehicle adapter

### 2.6 Connect the vehicle adapter



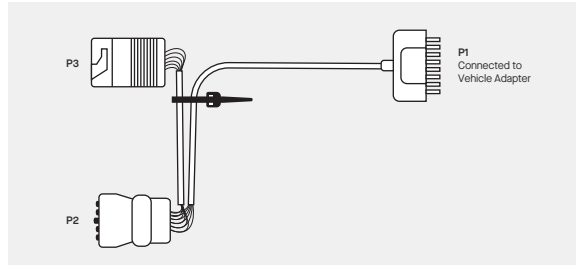
Plug the vehicle adapter into one end of the Y cable (P1).

## 2. Connect the AI Dashcam Plus

### 2.7 Connect the cable

#### Option 1: Direct Cable Connection

Use this method if you're connecting the cable directly into the vehicle's diagnostic port or operating in the state of California



#### Steps:

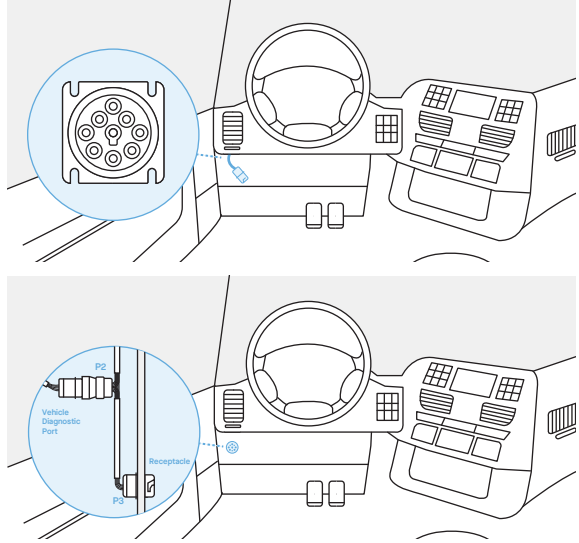
1. Secure the connection and use a cable tie to fasten the shorter cable P3 (which has the spare diagnostic connector) to the main cable. Place the zip tie near the spare diagnostic connector for secure fastening
2. Plug the male end of the Motive cable (P2) directly into the vehicle's diagnostic port.
3. The P3 end is not used for this installation type

**Note:** The OEM diagnostic port will not be available while the cable is plugged in.

## 2. Connect the AI Dashcam Plus

### Option 2: Y-Cable Connection

For covert installations, you'll want to use the Y splitter



### Steps:

1. Remove the OEM diagnostic port from its receptacle in the dashboard.
2. Plug the male end of the Motive cable (P2) into the removed diagnostic port.
3. Install and secure the female end of the Motive Cable (P3) using the appropriate clip into the original receptacle where the diagnostic port was located in the vehicle.

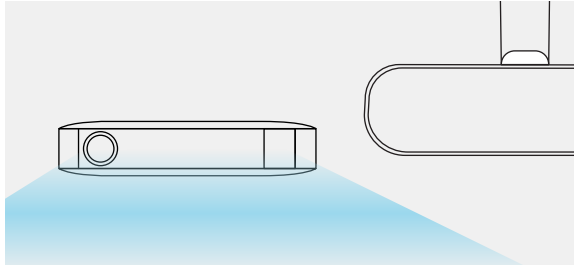
**Note:** The vehicle's diagnostics will remain accessible using the additional port on the Cable VCBL-Y-1939 (P3)



### 3. Test and Mount the AI Dashcam Plus

Refer to the AI Dashcam Plus Installation Guide available at [gomotive.com/aidashcamplus-install](https://gomotive.com/aidashcamplus-install) for instructions on testing and mounting the device to the vehicle's windshield or the left side of the rearview mirror.

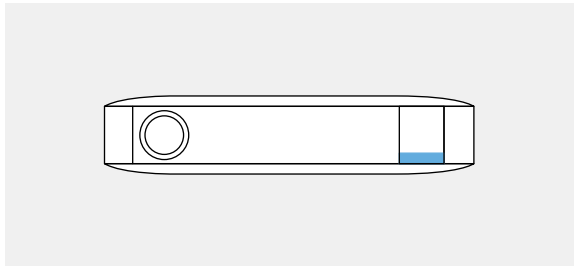
Once mounted, the final installation should resemble the example shown here



---

#### Power Connection

Start the vehicle's engine. Once the alert/right LED turns blue, your AI Dashcam Plus is powered on and connected!



# Potential Unlocked

**motive**

[gomotive.com](http://gomotive.com)