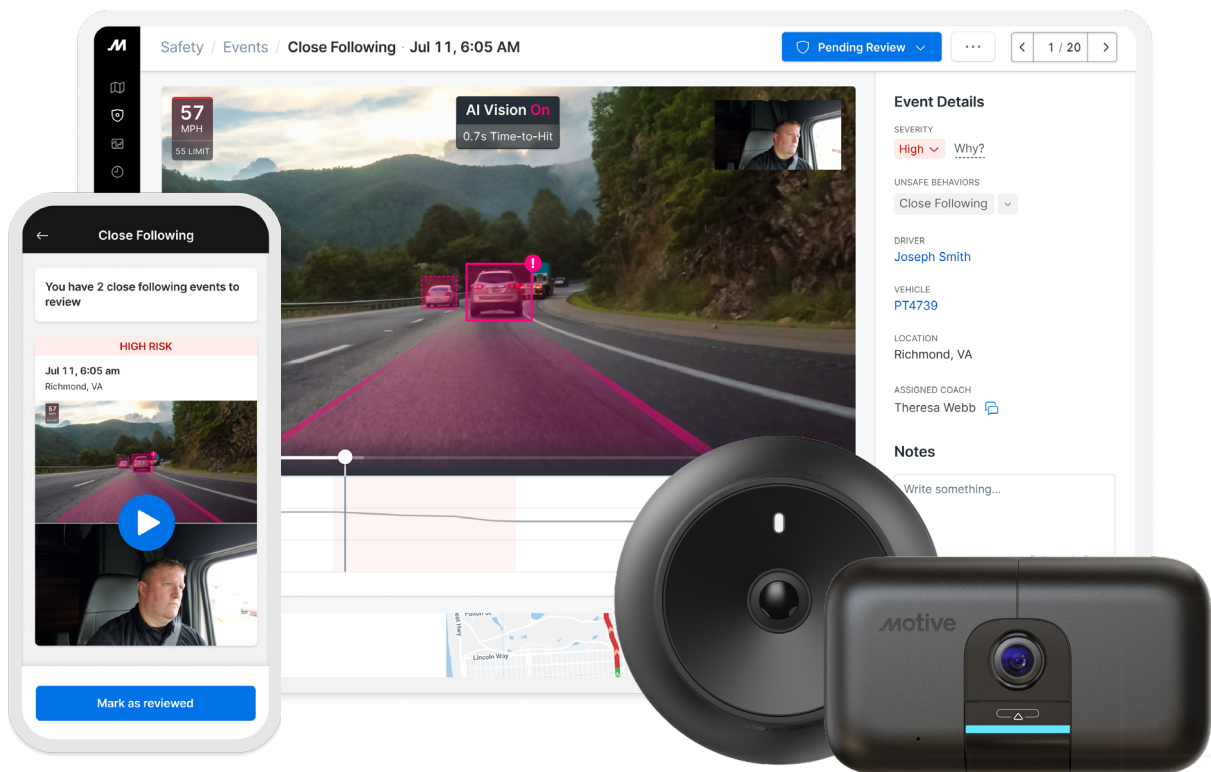


# Motive



# Driver Safety

Motive uses the industry's most accurate AI to monitor and protect drivers, and gives safety managers the tools to prevent accidents and reduce risk.



Motive AI Dashcam customers prevent accidents through active coaching, reduce accident-related expenses, and reduce insurance costs.

**57%**

Fewer accidents within four months

**30%**

Reduction in accident-related costs

**21%**

Reduction in insurance costs

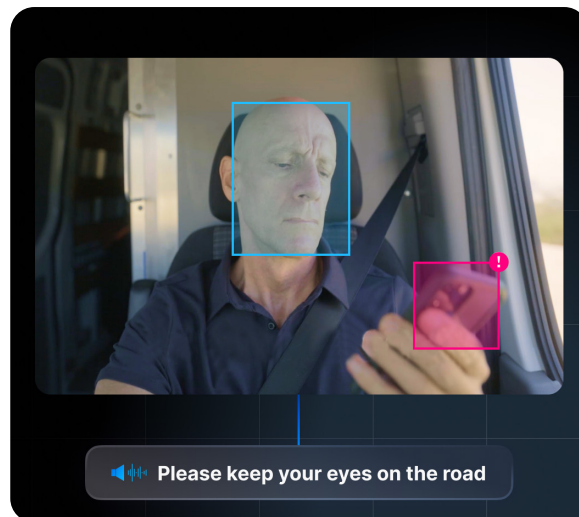
Jon Fontaine  
Corporate Fleet Manager  
[Rosendin Electric](#)

“At the end of the day, the cameras are a win. And seeing the capabilities of Motive and how the Motive team has provided support every step of the way, it’s a win-win.”

### Detects unsafe driving 3-4x more accurately than other systems.

AI instantly detects risky behaviors, such as cell phone use and close following. Deliver immediate feedback through audio and visual alerts. Only send true safety events for manager review.

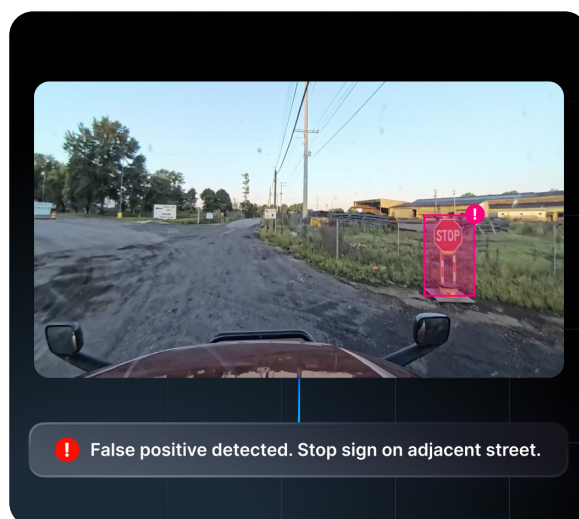
- Correct behaviors with in-cab coaching.
- Instill driver trust with fewer false alerts.
- Detect 15+ behaviors with advanced hardware.



### Ensure drivers are never punished for false positives.

Our Safety Team of 400+ members reviews your safety videos to eliminate false positives. Their expertise in identifying unique, real-world scenarios significantly improves the accuracy of our AI models.

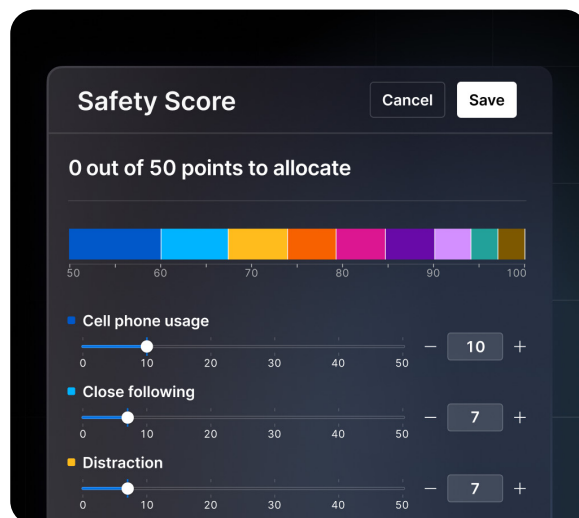
- Avoid penalizing drivers unfairly.
- Focus on true safety events.
- Detect more risks with AI enhancements.



### Coach drivers virtually with custom workflows and Safety Scores.

Our turnkey coaching tool automatically identifies drivers and behaviors that require attention. The Safety Score accurately measures driver risk over time and rewards safe driving.

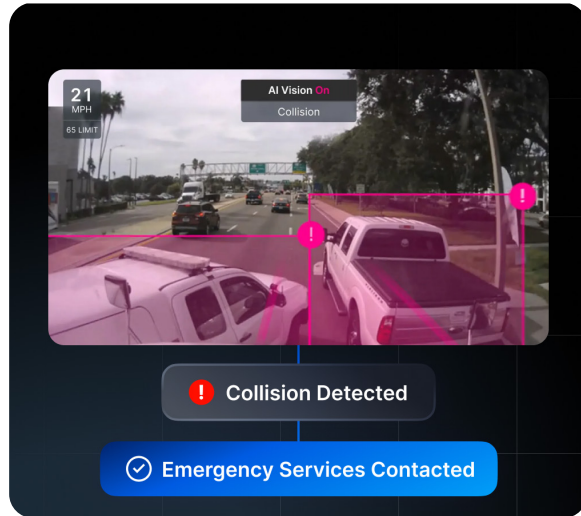
- Save time by focusing on real safety concerns.
- Enable self-improvement via the Driver App.
- Tailor settings to avoid video overload and risk.



**Swiftly detect 99% of the highest severity collisions.**

Accident videos upload within seconds, minimizing risk of losing footage. Video is captured even in a catastrophic accident, with managers alerted with relevant video and telematics data.

- Access video for roadside exoneration.
- Speed up claims with auto collision reports.
- Connect directly to first responders in severe collisions.



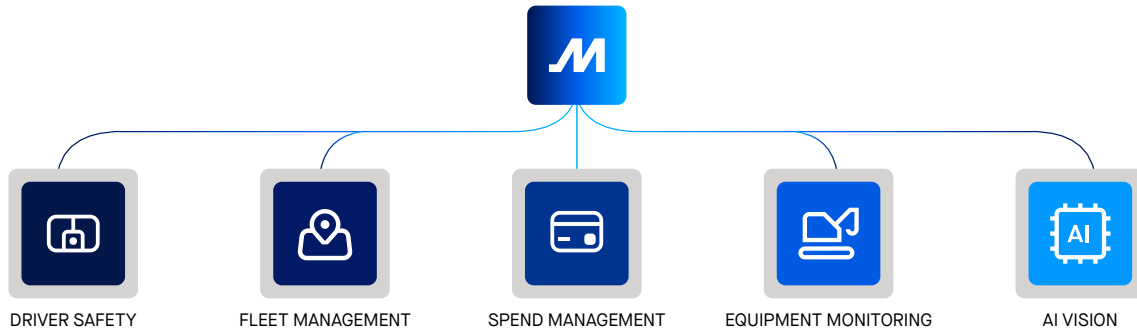
**Eliminate blind spots with 360° visibility around every vehicle.**

Pair the AI Dashcam and AI Omnicam for a full view of your vehicle, its interior, and its surroundings. Always get the full picture with live streaming, video recall, and engine-off recording.

- Detect risks with AI-powered side, rear, and cargo monitoring.
- Exonerate drivers with ultrawide HD video.
- Prevent accidents with live backup assist.\*



**Motive is the AI-powered Integrated Operations Platform for the physical economy.**



\* Coming soon



#### About Motive

Motive empowers the people who run physical operations with tools to make their work safer, more productive, and more profitable. For the first time, safety, operations, and finance teams can manage their workers, vehicles, equipment, and fleet-related spend in a single system. Motive serves more than 120,000 customers from small businesses to Fortune 500 enterprises such as Halliburton, KONE, Komatsu, NBC Universal, and Maersk across a wide range of industries including transportation and logistics, construction, energy, field service, manufacturing, agriculture, food and beverage, retail, waste services, and the public sector. Visit [gomotive.com](https://gomotive.com) to learn more.