

Motive



Smart Dashcam

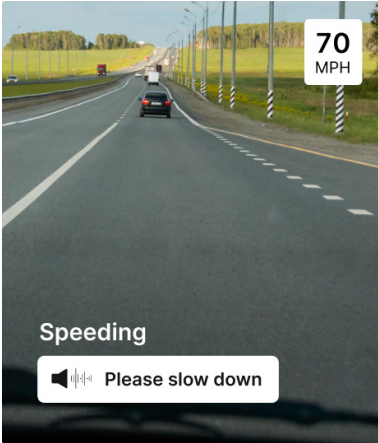
Smart. Accurate. Responsive. And your only eyewitness.

Prevent accidents, exonerate drivers, and lower insurance costs with the Motive Smart Dashcam.

Key benefits

Alert in real time

The Smart Dashcam instantly detects unsafe driving habits and alerts drivers to modify their behaviors in real time.



Automate coaching

The Motive Safety Team reviews and prioritizes video, making it easy to virtually coach drivers who need improvement.

Driver Coaching

- Speeding**
Daniel Brown
Coached
- Close Following**
Jose Bernardo
Coachable
- Seat Belt Violation**
Willy Payne
Pending Review

Protect your business

Get HD footage within seconds of an accident to protect drivers from false claims and defend against litigation.

Hard Brake

Vehicle: LCL125
Date: Apr 5, 2022
Time: 01:30 PM PST - 01:33 PM PST

Request Video

Key features

Alert in real time

High-risk event detection and upload

Motive Safety Team detection:

- **Violations**
 - Stop sign violation
 - Ran red light
 - Failure to yield
 - Passing violation
 - Improper lane usage
 - Railroad crossing
- **Core risk**
 - Close following
 - Unsafe lane change
 - Lane cutoff
- **Driver awareness**
 - Cell phone usage
 - Distraction
 - Seat belt violation
 - Drowsiness
 - Delayed response
 - Smoking

Telematics detection:

- **Violations**
 - Speeding above company limit
 - Speeding above posted speed limit

- **Harsh driving**

- Hard brake
- Hard acceleration
- Hard corner

Collision detection:

- Collision
- Near collision

Other:

- Camera installation issue
- Camera obstruction

In-cab audio and visual alerts

- Speeding above company limit
- Speeding above posted speed limit
- Hard brake
- Hard acceleration
- Hard corner
- Unidentified trip
- Seat belt violation (OBD-II vehicles only)

Automate coaching

Included in both Pro and Enterprise subscription plans

- Motive Safety Team
- Safety Hub
- Custom unsafe behavior detection
- Event intelligence
 - Risk insights
 - Event Severity
- Real-time speeding alerts
- Driver App coaching
- Coaching Sessions
- Customizable Safety Score

Protect your business

- Video recall:
Up to 3 minutes/request
- In-cab audio recording
- Dash cam health data (installation issues, disconnects, etc.)
- Automated collision reporting (FNOL)
- Live images
- Engine-off recording
- Driver Privacy Mode

Camera

	Road-facing camera	Driver-facing camera
Resolution	1920 × 1080 (1080p)	1280 × 720 (720p)
Frame rate	15 fps	15 fps
Field of view	163°	155°
Pixel size	3.0 μm x 3.0 μm	3.0 μm x 3.0 μm
Dynamic range	126 dB	120 dB
Aperture	f/2.2	f/2.0

Hardware

- Road-facing model #: DC-33
- Dual-facing model #: DC-34
- Camera storage:
Road-facing model: 68 hours
Dual-facing model: 91 hours
- Cable length: 13.1 ft (4 m)
- Dimensions:
3.35 × 3.35 × 1.28 in
(85 × 85 × 32.5 mm)
- Operational temperature:
-40°F–185°F (-40°C–85°C)
- Storage temperature:
-40°F–239°F (-40°C–115°C)
- Connectivity: High-speed LTE through included Motive Vehicle Gateway
- Microphone: Digital, omni-directional
- Speaker: Built-in
- LED lights for in-cab alerts: 1 LED

Requirements

These prerequisites must be met in order to use all the safety features available within the Motive platform.

- Motive Vehicle Gateway: All
- Motive Driver App (Android or iOS): v36
- Motive subscription
 - **Starter plan:** includes video recall only
 - **Pro, Enterprise plans:** includes all features

Motive



gomotive.com



855-434-3564



sales@gomotive.com