

Motive



AI Omnicam

Unlock 360° visibility with AI, and transform blind spots into insights.

Regain time, control, and reduce accident costs by seeing more of your fleet's operations. As part of the Motive safety platform, the AI Omnicam provides comprehensive coverage, including side, rear, passenger, and cargo monitoring so you can prioritize key tasks that require your attention. Reduce manual incident reviews, safety checks, and reporting.

Key benefits

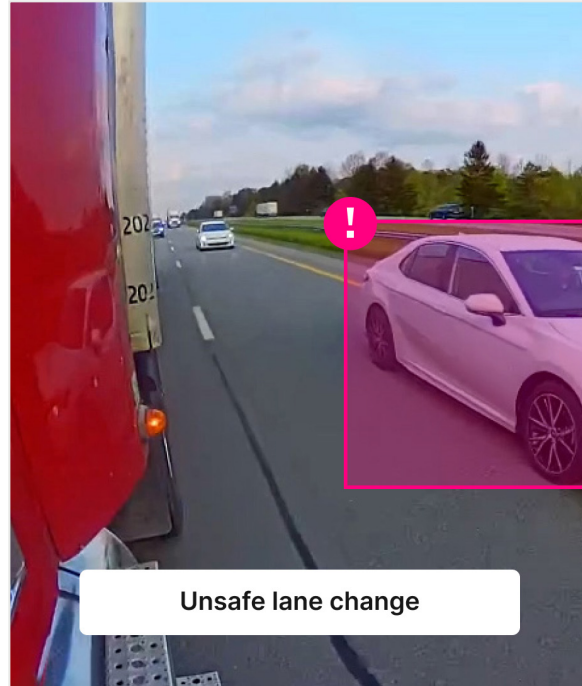
Instantly detect risk with the industry's most accurate AI

Proactively eliminate blind spots and prevent accidents with a wider field of view. Upcoming AI detects risky behaviors like:

- Unsafe lane changes.
- Incorrect cargo loading.
- Improper use of safety gear and heavy machinery.

Key features that make it possible

- State-of-the-art computer vision algorithms
- Leading edge AI processor
- Ultra wide-field cameras



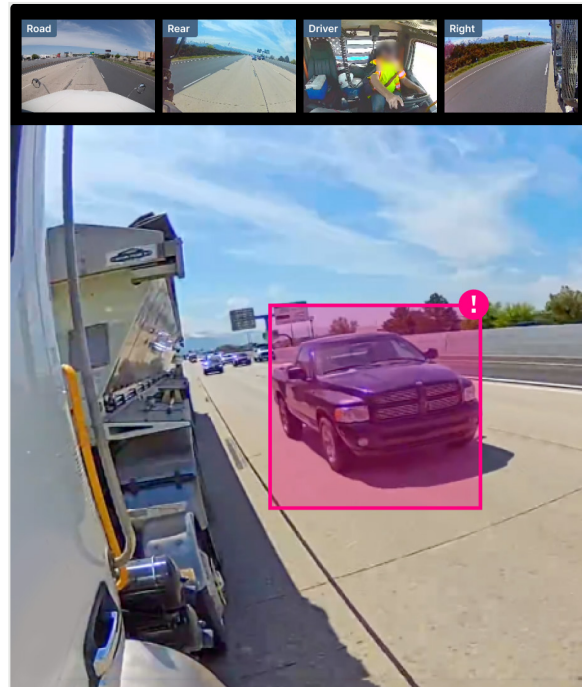
Resolve disputes faster

With 360° HD video evidence and automated reporting, quickly:

- Exonerate drivers from false side and rear collision claims.
- Investigate cargo theft and passenger incidents.
- Resolve disputes over loading and unloading of cargo, oil, and gas.

Key features that make it possible

- Collision detection with industry-leading accuracy and speed
- Video recall: Up to 3 minutes/request
- Built-in industrial grade battery for 2-5 minutes of backup power
- Clear 1080p HD video quality, day or night



Maximize worksite safety

Minimize workplace injuries, costly fines, and reputational damage with upcoming automated job site monitoring. Spend less time enforcing safety protocols, and take proactive steps to ensure a safer work environment.

Key features that make it possible

- Prioritized safety events based on severity
- Single video timeline view for 360° visibility
- Engine-off recording: 24 hours for heavy-duty, 45 minutes for light-duty
- Configurable recording duration: 50-200 hours



Specifications

Camera

Model #	OC-1
Resolution	1920 × 1080 (1080p)
Frame rate	30 fps
Pixel size	2.8 μm x 2.8 μm
Low light performance	Nightvision with IR illumination 4 IR LEDs with 20m range
Dynamic range	120dB
Aperture	f/2.0
Cable length	16.4 ft (5 m)

Camera (continued)

Dimensions	Camera = 3.23 × 3.23 × 2.64 in (82 × 82 × 67mm) Body Mount = 3.87 × 4.17 × 4.06 in (98.28 × 106 × 103.12mm)
Operational temperature	-22°F to 140°F (-30°C to 60°C)
Storage temperature	-40°F to 185°F (-40°C to 85°C)
Connectivity	Built-in 4G CAT-4 LTE
Configuration access point	Yes
Ingress protection rating	IP69K
AI architecture	Ambarella CV25 (capable of 7 models @ 7fps)
Integrated power-only cable	Connect the camera to either 12V/24V switched ignition power source or constant power source
System weight	Camera (includes cable) = 1.12lb (510g) Mount = 0.51lb (230g)
Shock rating	50g
Audio support	No audio recording
Material type	Camera and mount plastic = Polycarbonate Camera midframe = Aluminum alloy
Physical connector type	Bare wires

Field of view

Field of view	Diagonal: 170.2° Horizontal: 144.2° Vertical: 77.6°
---------------	---

Storage

Built-in storage	Configurable recording duration: 50-200 hours
Memory storage type	eMMC

Battery

Built-in battery backup power	2-5 minutes
Power consumption when recording in day light	4.7W
Power consumption when recording in night time (max)	6.4W

Mount accessory

- Camera ships with AI Omnicam body mount accessory (Model #: ACC-OC-BM1)
- Use the body mount accessory to mount the camera to any flat surface on the vehicle.



Mount



Camera in mount

Requirements

The following prerequisites must be met in order to use all the safety features available within the Motive platform.

- Motive Vehicle Gateway model: VG 3.55 and above
- AI Dashcam or Smart Dashcam
- Motive Fleet App (Android or iOS)
- **Motive subscription**
 - Pro, Enterprise plans
 - AI Omnicam plan
 - AI Dashcam or Smart Dashcam plan

Motive



gomotive.com



855-434-3564



sales@gomotive.com